

# VG1000

Class Leading  
Stabilizing Torque  
**1000 kNm!**

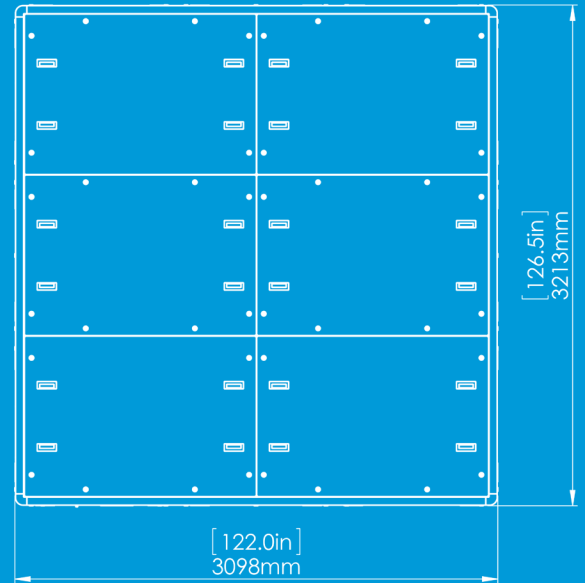
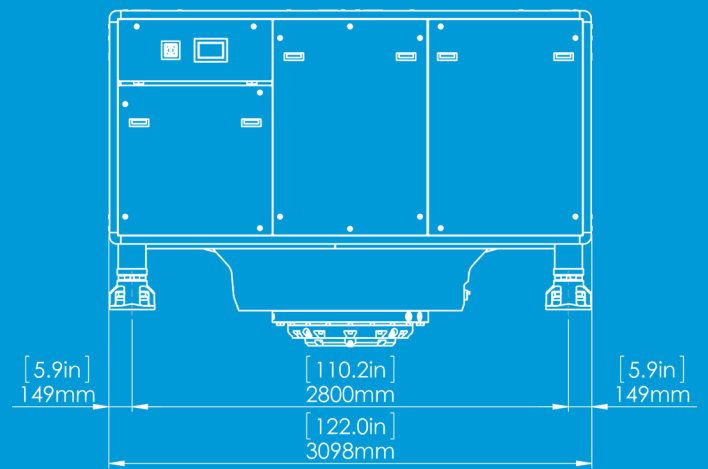
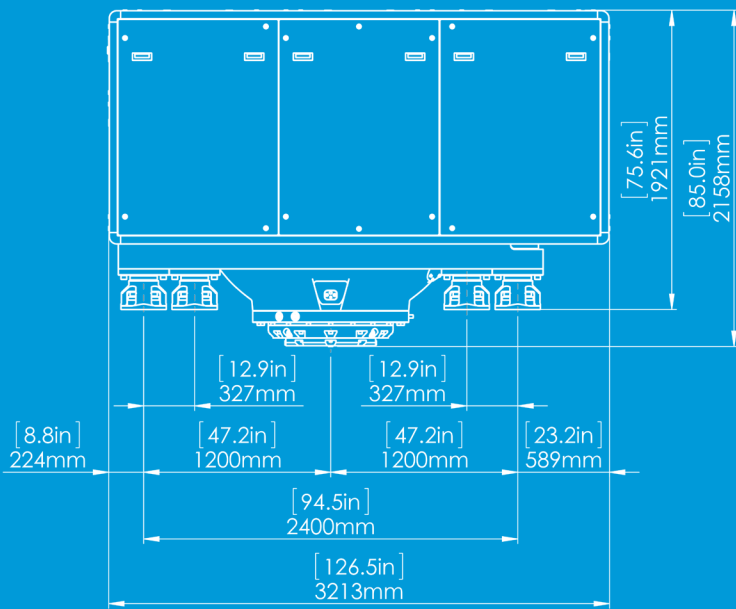
- Massive Stabilizing Torque
- Safe for Swimmers
- Continuous Operation in Severe Weather
- Higher Max Speed\*
- Increased Fuel Efficiency\*
- 0 to 50 knots
- Glass Bridge Interface
- No Fin Damage Risk
- Simple Installation and Operation
- Remote Access Support
- Colour Touch Screen
- ALL Servicing within yacht
- No Dry Docking, Ever
- Web Based Status Reports
- Low Maintenance
- Online Sizing Tool

\* As compared to fins on most yachts.

VG1000



Less Motion, More Ocean



## Technical Specifications

**Rated Torque** ..... 1000 kN.m

**Angular Momentum** ..... 521 000 N.m.s

**RPM** ..... 1930

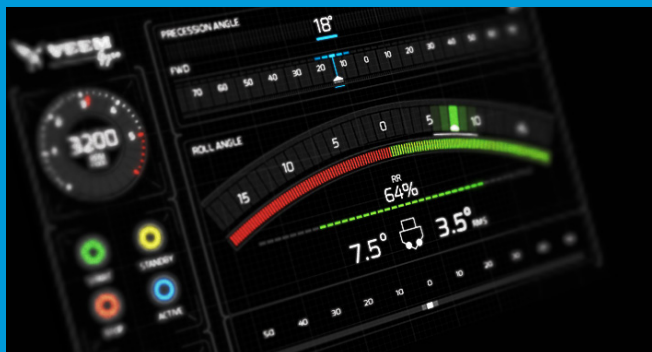
**Length** ..... 3.2 m

**Height** ..... 2.15 m

**Width** ..... 3.1 m

**Electrical Power** ..... 35 - 70 kW

**Total Mass** ..... 18.5 tonne



## GyroSize Calculator

To receive a PDF Report describing the VEEM Gyro solutions that suit your project, please use the GyroSize calculator available at: [www.veemgyro.com/gyro-size/](http://www.veemgyro.com/gyro-size/)



VEEM Ltd 22 Baile Road, Canning Vale,  
6155, Western Australia.  
Email: [gyro@veem.com.au](mailto:gyro@veem.com.au)  
[www.veemgyro.com](http://www.veemgyro.com)