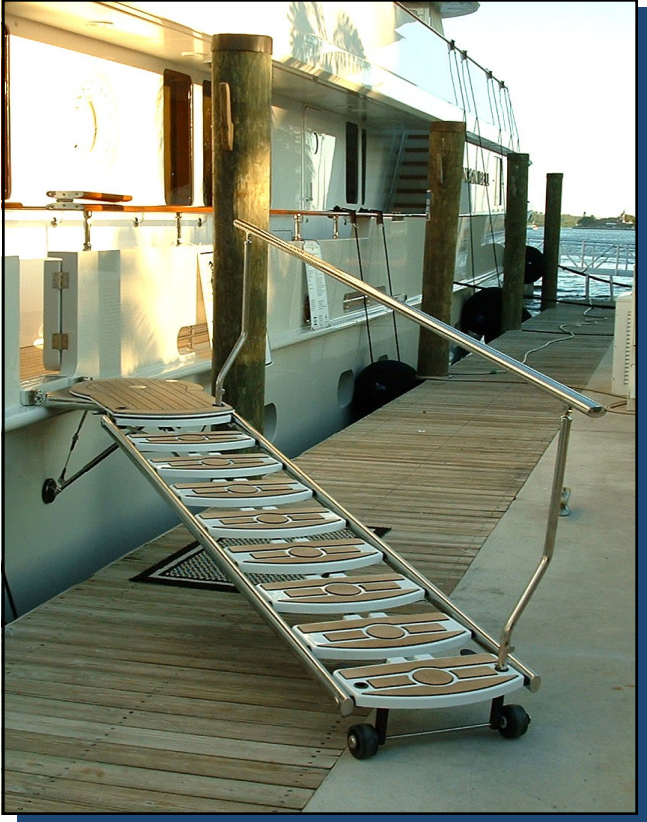




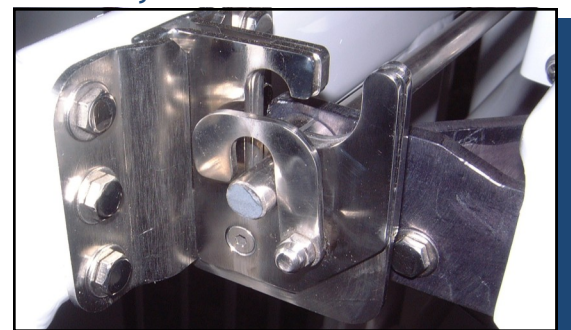
## Deluxe Tri-Rail Yacht Stair



- **Deluxe Tri-Rail treads** appear to “float” in suspension between the two stainless steel side-rail supports.
- **Self-leveling treads** are made of fiberglass with a rigid aluminum axle that rotates smoothly in delrin bushings.
- **Monorail side supports** eliminate the scissors-like pinch potential of other boarding stair designs, and provides a stiffer, more solid & secure feel when walking on the stairs.
- **Real inlaid teak non-skid tread inserts.**
- **One offset handrail**, either teak or polished stainless steel, is provided for your boarding safety, and a second may be ordered as an optional feature.
- **Yacht Stairs rod-mount** conveniently and lock securely into flush-mount stainless steel hull side brackets.
- **Rotation mounting platforms** and / or self-storing pocketing Yacht Stairs are available as optional features.

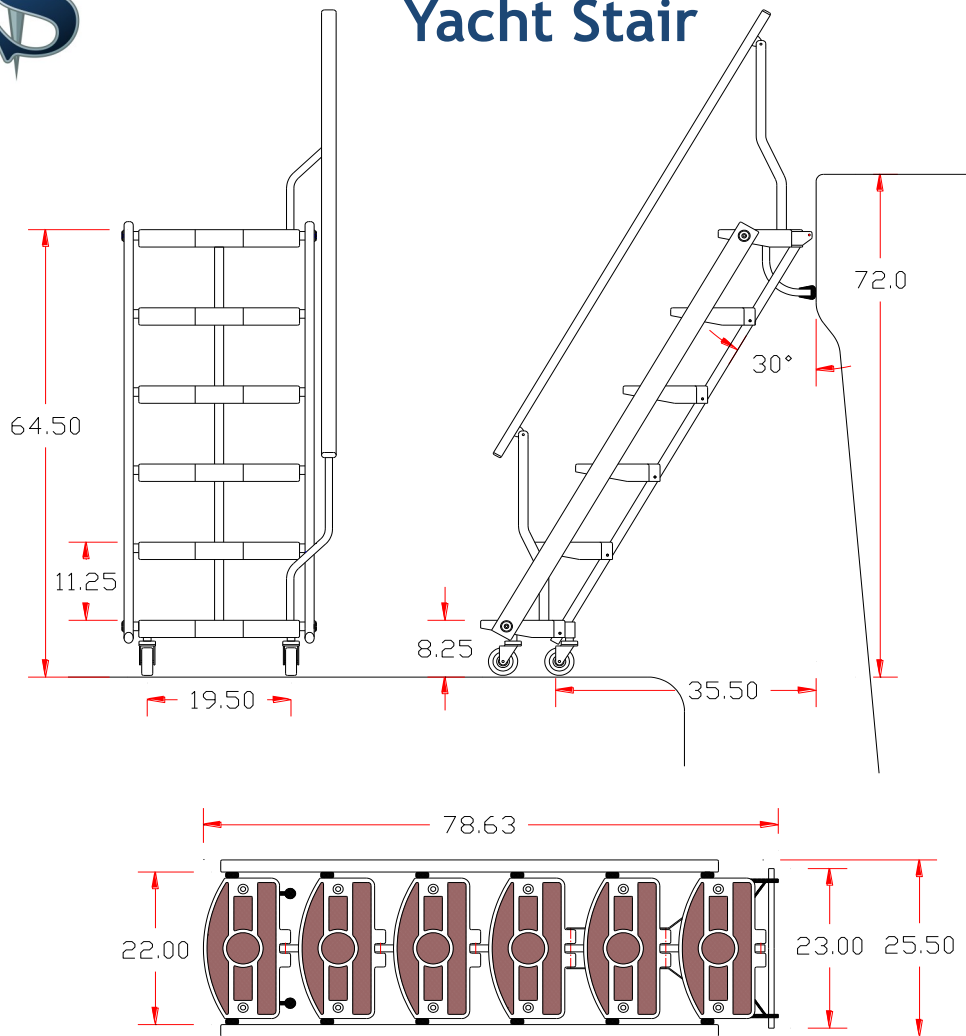


Top: Rotation Platform; allows the stairway to rotate 160°





# Deluxe Tri-rail Yacht Stair



A close-up detail of the in-field adjustable leveling standoff. Our design protects the crutch-tip from damage and requires no tools for fine adjustment.



A close-up detail of the innovative handrail stanchion-clamp. Note the delrin socket to receive the self-clamping stan-

## DELUXE TRI-RAIL YACHT STAIR - MECHANICAL SPECIFICATIONS

Number of treads	Stowed Length x Width x Thickness	Working Height: Deck to Dock	Weight, Stainless Steel (Approximate)
5	65.63 x 25.5 x 3.25in [1667 x 647 x 83 mm]	to 53.3in [135 cm]	69lb [31kg]
6	78.63 x 25.5 x 3.25in [1997 x 647 x 83 mm]	to 64.5in [164 cm]	80lb [36kg]
7	91.63 x 25.5 x 3.25in [2327 x 647 x 83 mm]	to 75.8in [192 cm]	91lb [41kg]
8	104.63 x 27.13 x 4.0in [2657 x 688 x 102 mm]	to 87.0in [220 cm]	109lb [49kg]
9	117.63 x 27.13 x 4.0in [2987 x 688 x 102 mm]	to 98.3in [250 cm]	128lb [58kg]

7301 114th Avenue North • Largo, Florida 33773

Phone: (727) 541-6664 • Facsimile: (727) 541-6353 • North America Toll Free: (888) 541-6664

Email: sales@nautical-structures.com • www.nautical-structures.com



## Deluxe Carbon Fiber Tri-Rail Yacht Stair



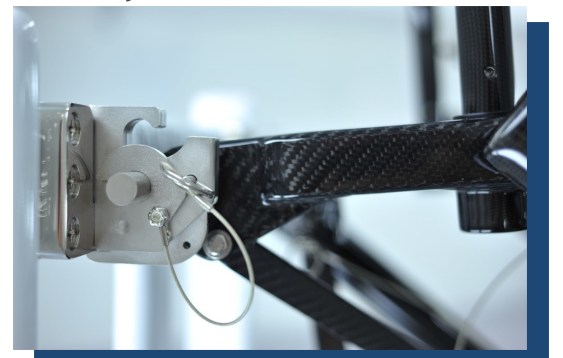
7-Step stair weighs:  
43.5 lbs (19.73 kg).  
The handrail weighs:  
8.1 lbs (3.67 kg).



- **Deluxe Carbon Fiber Tri-Rail treads** appear to “float” in suspension between the two carbon fiber side-rail supports.
- **Self-leveling treads** are made of Carbon Fiber with a rigid aluminum axle that rotates smoothly in delrin bushings.
- **Monorail side supports** eliminate the scissors-like pinch potential of other boarding stair designs, and provides a stiffer, more solid & secure feel when walking on the stairs.
- **Real inlaid teak non-skid tread inserts.**
- **One offset handrail**, made of carbon fiber is provided for your boarding safety, and a second may be ordered as an optional feature.
- **Yacht Stairs rod-mount** conveniently and lock securely into flush-mount stainless steel hull side brackets.
- **Rotation mounting platforms** and /or self-storing pocketing Yacht Stairs are available as optional features.

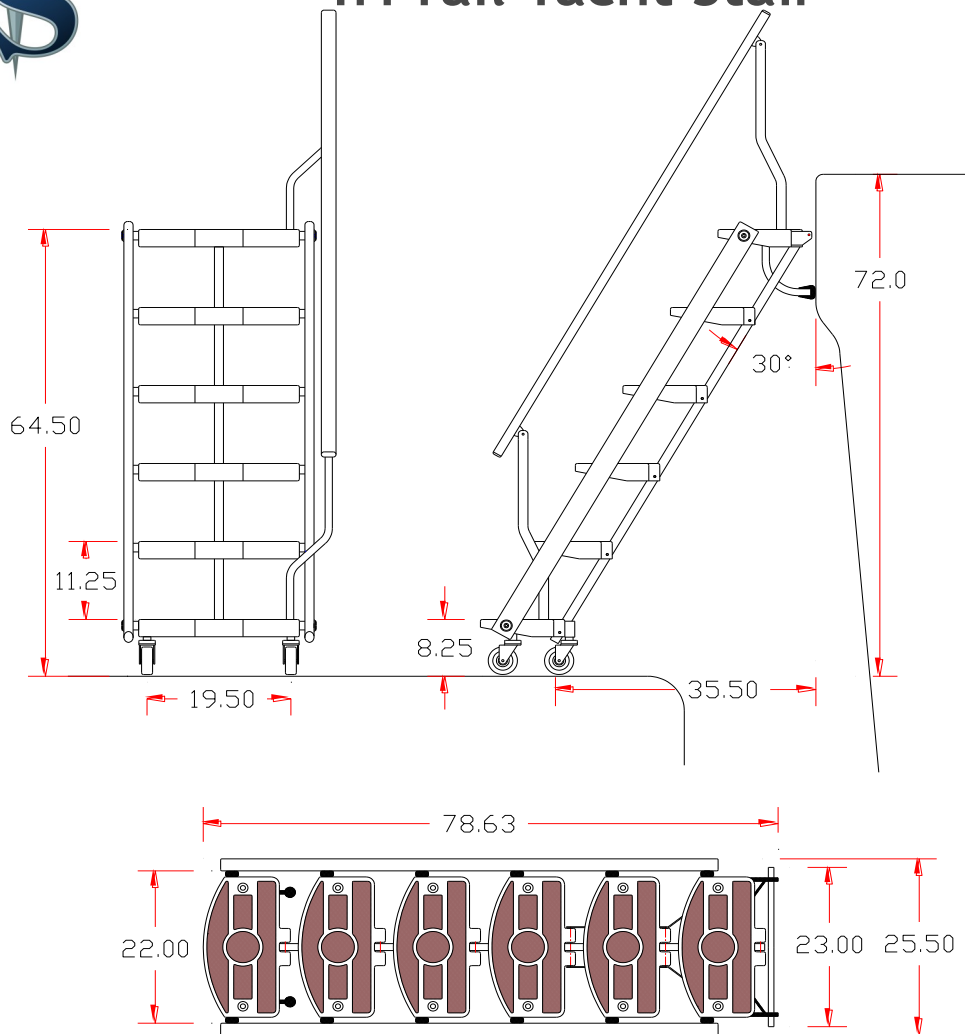


Top: Rotation Platform; allows the stairway to rotate 160°.





# Deluxe Carbon Fiber Tri-rail Yacht Stair



A close-up detail of the in-field adjustable leveling standoff. Our design protects the crutch-tip from damage and requires no tools for fine adjustment.



A close-up detail of the innovative handrail stanchion-clamp. Note the delrin socket to receive the self-clamping stanchion.

## DELUXE CARBON FIBER TRI-RAIL YACHT STAIR - MECHANICAL SPECIFICATIONS

Number of treads	Stowed Length x Width x Thickness	Working Height: Deck to Dock	Weight, Carbon Fiber (Approximate)
5	65.63 x 25.5 x 3.25in [1667 x 647 x 83 mm]	to 53.3in [135 cm]	35lb [315.88kg]
6	78.63 x 25.5 x 3.25in [1997 x 647 x 83 mm]	to 64.5in [164 cm]	42lb [19.00kg]
7	91.63 x 25.5 x 3.25in [2327 x 647 x 83 mm]	to 75.8in [192 cm]	49lb [22.23kg]
8	104.63 x 27.13 x 4.0in [2657 x 688 x 102 mm]	to 87.0in [220 cm]	56lb [25.40kg]
9	117.63 x 27.13 x 4.0in [2987 x 688 x 102 mm]	to 98.3in [250 cm]	63lb [63.00kg]

7301 114th Avenue North • Largo, Florida 33773

Phone: (727) 541-6664 • Facsimile: (727) 541-6353 • North America Toll Free: (888) 541-6664

Email: [sales@nautical-structures.com](mailto:sales@nautical-structures.com) • [www.nautical-structures.com](http://www.nautical-structures.com)