



**NAUTICAL  
STRUCTURES**  
Marine Engineering and Manufacturing

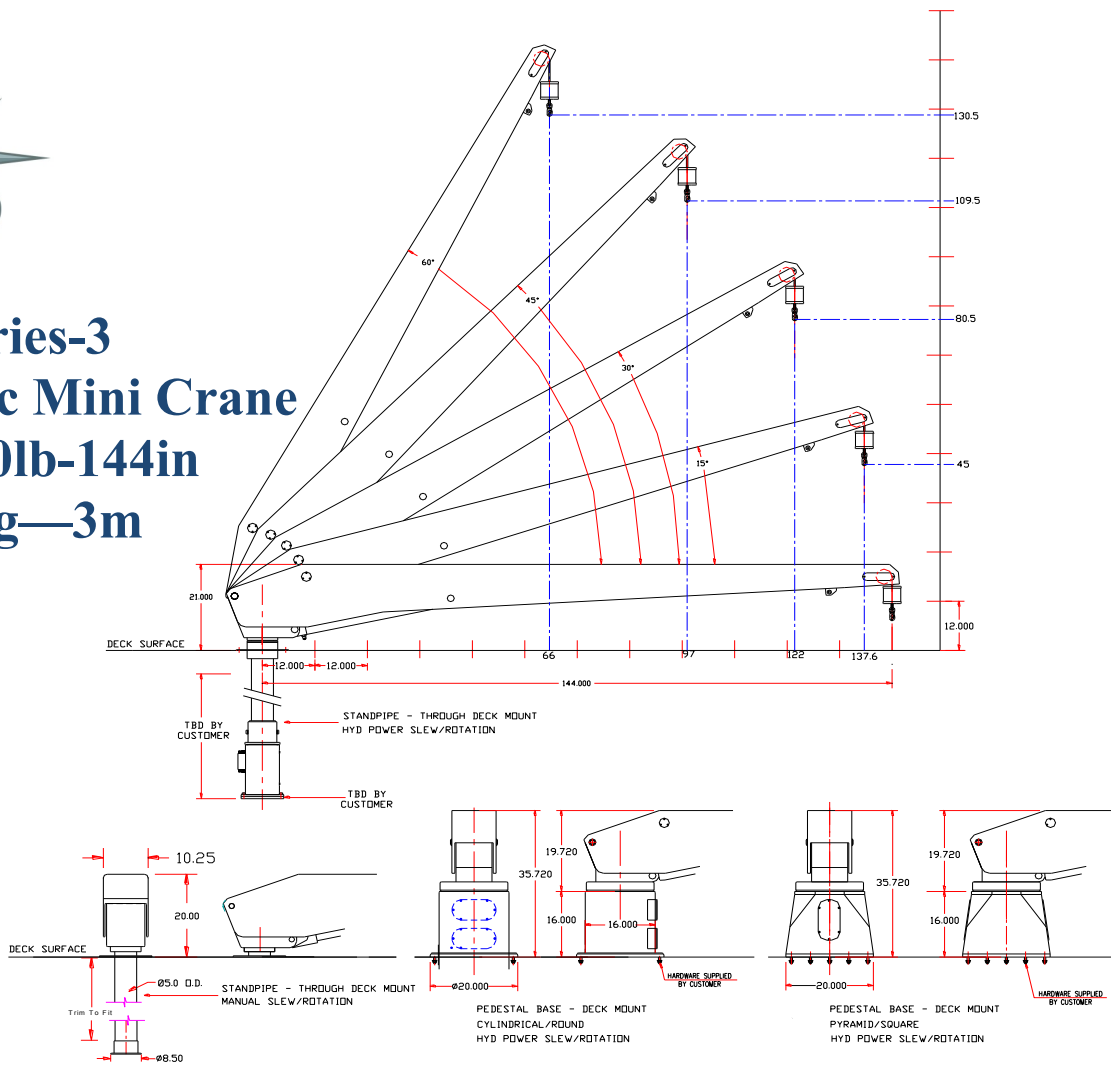
**HMC Series-3  
Hydraulic Mini Crane  
1100/1700lb-144in  
499/771kg-3m**



- Available in 1,100-lb [498-kg] or 1,700-lb [771kg] maximum capacity.
- 12-ft [3m] boom length, measured from center of rotation to the end of the boom.
- Hydraulic boom luffing (raising/lowering the boom/arm), capable of the maximum rated capacity in any position without restriction.
- Featuring our non-fouling linear winch design with self-limiting travel, two-block protection, self-locking load holding capabilities, automatic lifting overload protection (L.O.P.) for safe, dependable, quiet cable payout and retrieval.
- Aluminum hydraulic cylinders with integrated safety locking valves for safe operation, enhanced protection against corrosion and reduced weight.
- Hydraulic power rotation/slewing for enhanced control and ease of operation.
- A through-deck mount standpipe is the typical mounting structure for the *HMC* Davit, although a deck mounted pedestal base, cylindrical [round] or pyramid [square] design is available.
- Hydraulic power unit, one-horsepower with tray for remote mount.
- The davit system is finished to our Nautical Structures high level of quality with urethane paint products. Our standard colors are Snow White, Off White & Matterhorn White. All other colors will be special order and quoted upon request.
- System assembled and dynamic load tested prior to shipment.
- 1- YEAR WARRANTY including materials and workmanship, electrical, hydraulic and labor, see warranty for details.



# HMC Series-3 Hydraulic Mini Crane 1100/1700lb-144in 499/771kg—3m



MECHANICAL SPECIFICATIONS		ELECTRIC – HYDRAULIC SPECIFICATIONS	
Hydraulic Boom Luffing from 0° through 60°.		110/120V AC, 60 Hz, 1 Ph. Supply on a 25 amp breaker. 220/230V AC, 60 Hz, 1 Ph. Supply on a 20 amp breaker. 230V AC, 50 Hz, 1 Ph. Optional configuration.	
Reach (Maximum at 15° position):	138in / 350cm	Removable, waterproof Delrin remote control with a 20' [6.1-m] pendant tether and weather connectors.	
Reach (Minimum at 60° position):	65in / 165cm		
Aft rotation clearance:	10.75in / 27cm		
359° hydraulic power rotation/slew .		1 hp Hydraulic power unit, 3000 psi-203 bar.0.5gpm / 1.8lpm output. Fluid type: AW-68, ISO quality 17/15/12	
Hydraulic Linear Winch system. Rigged 6:1 with stainless steel wire rope, brass weight and stainless steel safety snap hook.		RATED CAPACITY	
Cable pay-out:	21ft / 6.40m	HMC1100-144:	1,100 Pounds / 499kg
		HMC1700-144:	1,700 Pounds / 771 kg
Davit weight, HMC1100-144:	318lb / 144kg	HMC1100: 13,200 Ft/Lb. Maximum moment capacity. HMC1700: 20,400 Ft/Lb. Maximum moment capacity.	
Standpipe weight, 5" dia., man rot.:	86lb / 39kg	12 Month limited warranty.	
System weight, HMC1600-144:	338lb / 153kg		
Standpipe weight, 5in DIA manual rotation	137lb/ 62kg	© 2014 - NSI	

7301 114th Avenue North • Largo, Florida 33773

Phone: (727) 541-6664 • Facsimile: (727) 541-6353 • North America Toll Free: (888) 541-6664

Email: sales@nautical-structures.com • www.nautical-structures.com

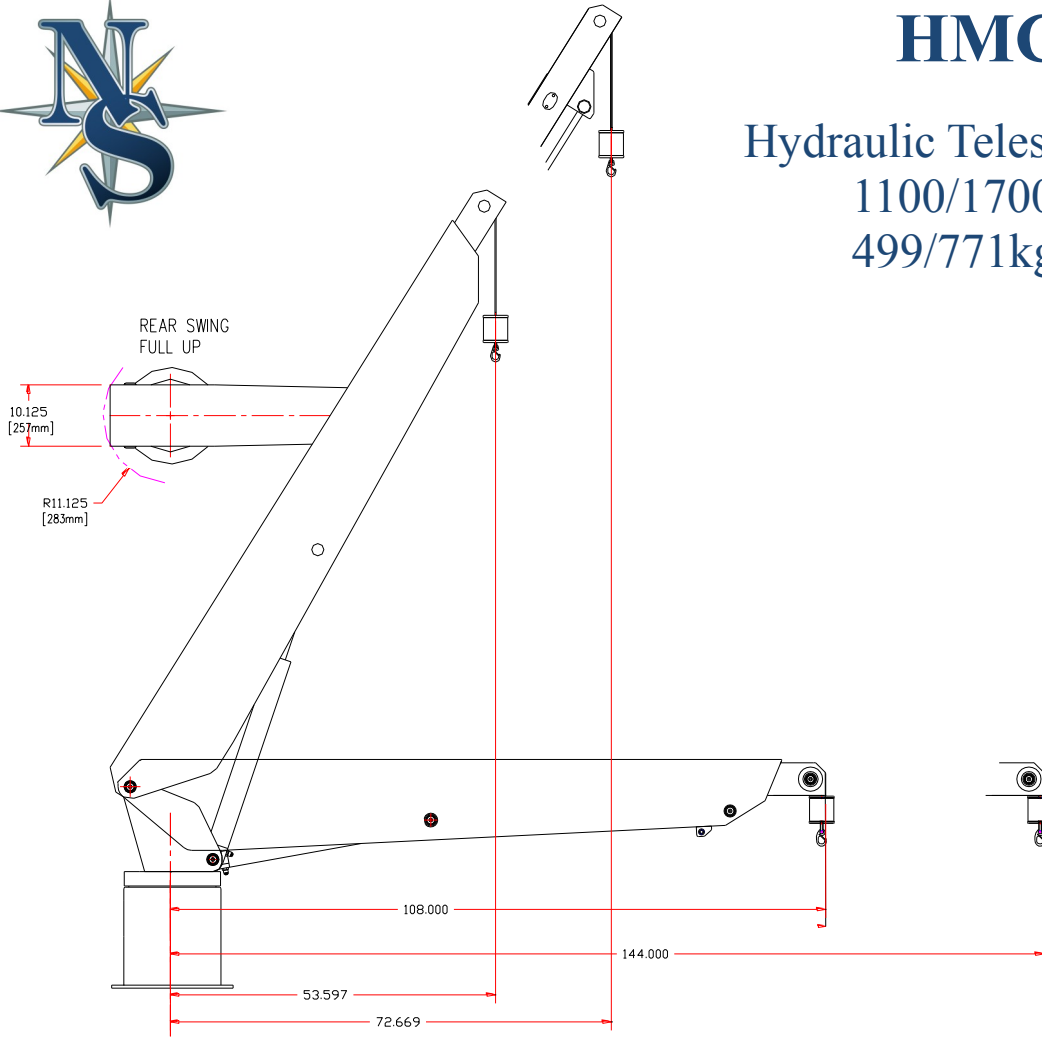


- 1,100/1,700lb (499/771kg) maximum hoist capacity, capable of the full rated capacity in any position without restriction.
- 9 ft. (2.74m) Stowed dimension, with hydraulic telescoping boom extension fully retracted, measured from the center of rotation to the end of the boom.
- 12ft (3.66m) Maximum reach with hydraulic telescoping boom fully extended.
- Hydraulic linear winch, a non-fouling design built into the extension (maintains constant cable length during extension and retraction of the boom extension). Features self-limiting travel, (two-block protection) self-locking load holding capabilities, L.O.P. (automatic lifting overload protection) for smooth, quiet cable payout and retrieval.
- Hydraulic boom luffing, capable of the full rated capacity at any boom angle.
- Aluminum hydraulic cylinders with integrated safety locking valves for safe operation, enhanced protection against corrosion and reduced weight.
- Hydraulic power rotation/slewing for enhanced control and ease of operation.
- Removable, waterproof hand held remote with weather connectors & wander-lead.
- Pedestal base deck mount, aluminum, cylindrical (round) or pyramid (square) design. Optional hydraulic power rotating/slewing through deck mount standpipe available.
- Hydraulic power unit, one-horsepower with tray for remote mount.
- The davit system is finished to our Nautical Structures high level of quality with urethane paint products. Our standard colors are Matterhorn white, Off white, and Snow white. All other colors will be special order and quoted upon request.
- System assembled and dynamic load tested prior to shipment.
- 1- YEAR WARRANTY including materials and workmanship, electrical, hydraulic and labor. See warranty for details.



# HMC Series

Hydraulic Telescoping Mini Crane  
 1100/1700lb 108-144in  
 499/771kg 2.74-3.65m



MECHANICAL SPECIFICATIONS	ELECTRIC – HYDRAULIC SPECIFICATIONS
Hydraulic Boom Luffing from 0° through 58°. 3 ft. Hydraulic Boom Extension	115V AC, 50-60 Hz, 1 Ph. 230V AC, 60 Hz, 1 Ph.
Reach (Max. at 0° position): 108in- 144in(274 - 366cm)	230V AC, 50 Hz, 1 Ph. Optional configuration.
Reach (Minimum at 58° position): 53in -72in (134-183cm)	Remote control switch is wired to a 20ft/ 6.1m removable pendant.
Hydraulic Linear Winch system. Rigged 6:1 with stainless steel wire rope, brass weight and stainless steel safety snap hook.	1 Hp Hydraulic power unit, 3000 psi / 203 bar, 0.5 gpm - 1.0 gpm / 1.8 lpm - 3.8 lpm output. Fluid type: QS-888, ISO quality 17/15/12
Hydraulic rotation pedestal mounting: 359° Optional hyd pwr rotating/slewing standpipe Aft rotation clearance: 11.125in / 28.2cm	
Cable pay-out: 21ft / 6.4m	
System weight, HMC– 1100/1700-EX: 398lb / 180kg System weight, Pedestal Base: 137lb / 62kg	
	<b>RATED CAPACITY</b>
	HMC 1100/1700-EX-108-144: 1,700lb / 771 kg
	HMC 1100/1700: 20,400 ft/lb Maximum moment capacity.
	12 Month limited warranty. © 2014 - NSI

7301 114th Avenue North • Largo, Florida 33773

Phone: (727) 541-6664 • Facsimile: (727) 541-6353 • North America Toll Free: (888) 541-6664

Email: sales@nautical-structures.com • www.nautical-structures.com

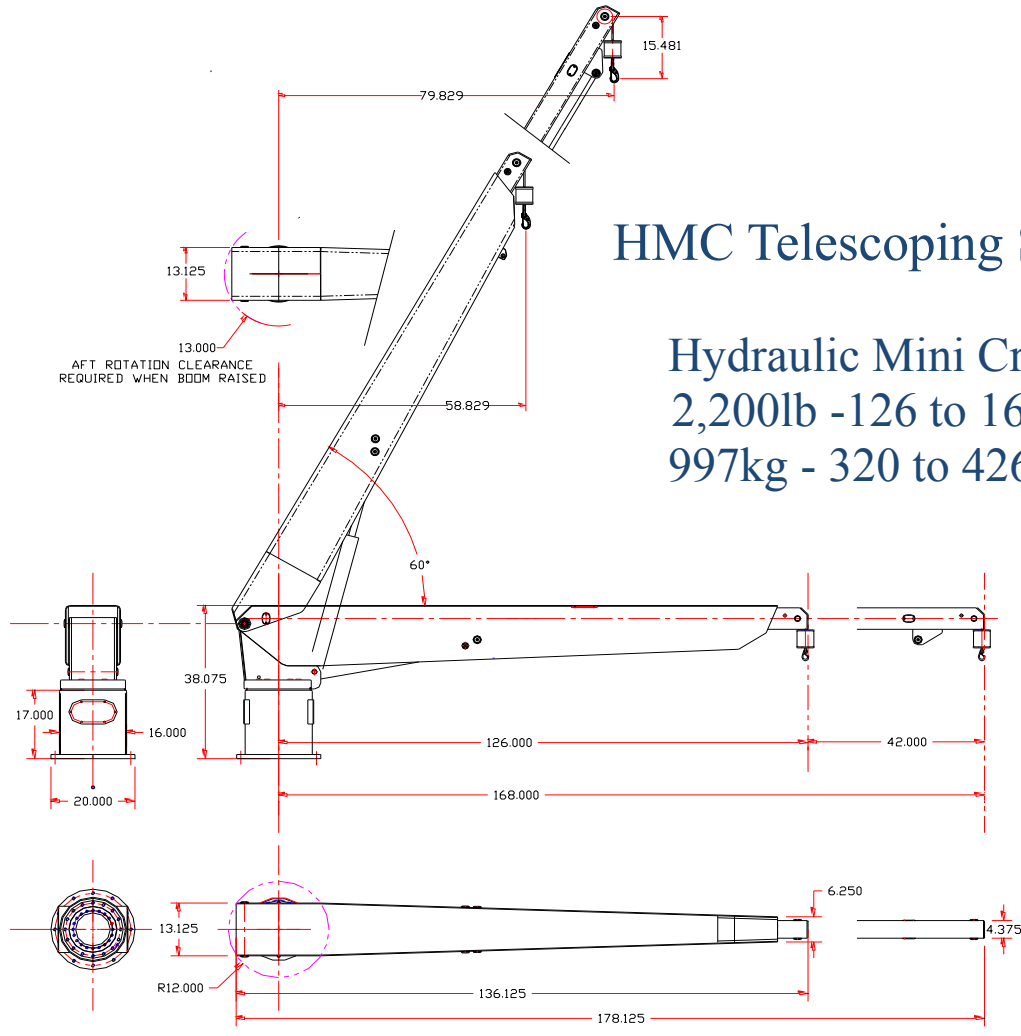


- 2,200lb (998kg) maximum hoist capacity, capable of the full rated capacity in any position without restriction.
- 126in (320cm) Stowed dimension, with hydraulic telescoping boom extension fully retracted, measured from the center of rotation to the end of the boom.
- 168in (426cm) Maximum reach with hydraulic telescoping boom fully extended.
- Hydraulic linear winch, a non-fouling design built into the extension (maintains constant cable length during extension and retraction of the boom extension for enhanced control). Features self-limiting travel, (two-block protection) self-locking load holding capabilities, L.O.P. (automatic lifting overload protection) for safe smooth, quiet cable payout and retrieval.
- Hydraulic boom luffing, capable of the full rated capacity at any boom angle.
- Aluminum hydraulic cylinders with integrated safety locking valves for safe operation, enhanced protection against corrosion and reduced weight.
- Hydraulic power rotation/slewing for enhanced control and ease of operation.
- Removable, waterproof hand held remote with weather connectors & wander-lead.
- An aluminum Pedestal base deck mount, cylindrical (round) or pyramid (square) design. Also available is an optional aluminum hydraulic power rotating/slewing through deck mount standpipe. Hydraulic power unit, five-horsepower with tray for remote mount.
- The davit system is finished to our Nautical Structures high level of quality with urethane paint products. Our standard colors are Matterhorn white, Off white, and Snow white. All other colors will be special order and quoted upon request.
- System assembled and dynamic load tested prior to shipment.
- 1-YEAR WARRANTY including materials and workmanship, electrical, hydraulic and labor, see warranty for details.

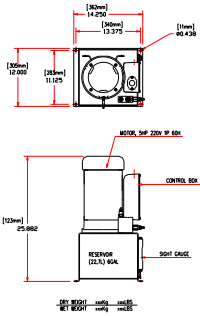


# HMC Telescoping Series

Hydraulic Mini Crane  
 2,200lb - 126 to 168in  
 997kg - 320 to 426cm



Example of cylindrical [round] pedestal base; also available are a pyramid [square] or a hydraulic power rotating/ slewing through deck mount standpipe



MECHANICAL SPECIFICATIONS	ELECTRIC – HYDRAULIC SPECIFICATIONS
Hydraulic Boom Luffing from 0° through 58°. 3.5ft (1m) Hydraulic Boom Extension	230V AC, 60 Hz, 1 Ph. 230V AC, 50 Hz, 1 Ph. Special order.
Reach (Max. at 0° position): 126 – 168in (320-426cm)	Remote control switch is wired to a 20ft/ 6.1m removable pendant.
Reach (Minimum at 60° position): 58-79in (147cm-200cm) Aft rotation clearance: 13in / 33cm	5 Hp Hydraulic power unit, 3000 psi / 203 bar, 0.5 gpm - 1.0 gpm / 1.8 lpm - 3.8 lpm output. Fluid type: QS-888, ISO quality 17/15/12
Hydraulic Linear Winch system. Rigged 6:1 with stainless steel wire rope, brass weight and stainless steel safety snap hook.	<b>RATED CAPACITY</b>
Cable pay-out: 21ft / 6.4 m	HMC 2200 -126-168 2,200 / 998kg
System weight, HMC– 2200 EX: 1100lb / 499kg	HMC 2200: 30,800 ft/lb Maximum moment capacity.
System weight, Pedestal Base 137lb / 62kg 8 in. / 20.3 cm Diameter standpipe weight: 270lb / 122kg	12 Month limited warranty. © 2014 - NSI

7301 114th Avenue North • Largo, Florida 33773  
 Phone: (727) 541-6664 • Facsimile: (727) 541-6353 • North America Toll Free: (888) 541-6664  
 Email: sales@nautical-structures.com • www.nautical-structures.com