

EUROPLAN

YACHT INTERIORS



Passion for finding solutions and making customers 'dreams come true.

With modern drawing tools, all in 3D, and rendering programs we bring life to customers' décor elements detailing.

We know how important it is to have reliable communication channels to share ideas on an equal footing. Faithful co-operation and timely trust communication are key aspects in our implementation.

REFERENCE, New build



Ulysses U116 (116m expedition yacht)

- Delivery 2018
- Europlan's scope of work:
- Interior turnkey delivery Owner, Guest areas 2300m2, and Crew areas 1200m2 including engineering, materials and installation
- Electrification and AV-package with engineering, materials and installation
- Interior design by RWD (Redman Whiteley Dixon)

• OPTIONALLY FOLLOWING CAN BE OFFERED AS WELL

- All electrical systems
- Sound & AV-systems including concept design
- All piping systems
- All HVAC systems
- Galley, pantry, laundry etc. equipment's
- Insulation etc. misc. background systems
- Exterior areas (ceilings, tiling, wind glass, etc.)
- Interior design, Architectural.

REFERENCE, New build



Andromeda U107 (107m expedition yacht)

- Delivery 2016
- Europlan's scope of work:
- Interior turnkey delivery Owner, Guest areas 1700m2 and Crew areas 1200m2 including engineering, materials and installation
- Electrification and AV-package with engineering, materials and installation
- Interior design by H2 Yacht Design

• OPTIONALLY FOLLOWING CAN BE OFFERED AS WELL

- All electrical systems
- Sound & AV-systems including concept design
- All piping systems
- All HVAC systems
- Galley, pantry, laundry etc. equipment's
- Insulation etc. misc. background systems
- Exterior areas (ceilings, tiling, wind glass, etc.)
- Interior design, Architectural.

REFERENCE, Refit



Here Comes the Sun , Delivery 2021

- Europlan's scope of work:
- Interior delivery,
- Wheel house,
- Guest cabins,
- Outside glazing
- Outside pool tiling
- Crew areas

• OPTIONALLY FOLLOWING CAN BE OFFERED AS WELL

- All electrical systems
- Sound & AV-systems including concept design
- All piping systems
- All HVAC systems
- Galley, pantry, laundry etc. equipment's
- Insulation etc. misc. background systems
- Exterior areas (ceilings, tiling, wind glass, etc.)
- Interior design, Architectural.

REFERENCE, Refit



Ulysses 116 Refit, Delivery 2022

- Europlan's scope of work:
- Interior delivery,
- Crew areas
- Equipment update
- Crew cabins
- Crew areas

• OPTIONALLY FOLLOWING CAN BE OFFERED AS WELL

- All electrical systems
- Sound & AV-systems including concept design
- All piping systems
- All HVAC systems
- Galley, pantry, laundry etc. equipment's
- Insulation etc. misc. background systems
- Exterior areas (ceilings, tiling, wind glass, etc.)
- Interior design, Architectural.

REFERENCE,



Installation of Luxury interiors, M/Y Energy , Delivery 2022

- Europlan's scope of delivery
- Installation of materials in all luxury areas.
-

• OPTIONALLY FOLLOWING CAN BE OFFERED AS WELL

- All electrical systems
- Sound & AV-systems including concept design
- All piping systems
- All HVAC systems
- Galley, pantry, laundry etc. equipment's
- Insulation etc. misc. background systems
- Exterior areas (ceilings, tiling, wind glass, etc.)
- Interior design, Architectural.

REFERENCE,



Installation of interiors, Yacht support vessel, Delivery 2022

- Europlan's scope of delivery.
- Installation of materials in all areas.
-

• OPTIONALLY FOLLOWING CAN BE OFFERED AS WELL

- All electrical systems
- Sound & AV-systems including concept design
- All piping systems
- All HVAC systems
- Galley, pantry, laundry etc. equipment's
- Insulation etc. misc. background systems
- Exterior areas (ceilings, tiling, wind glass, etc.)
- Interior design, Architectural.

REFERENCE, Refit, Support vessel U-81



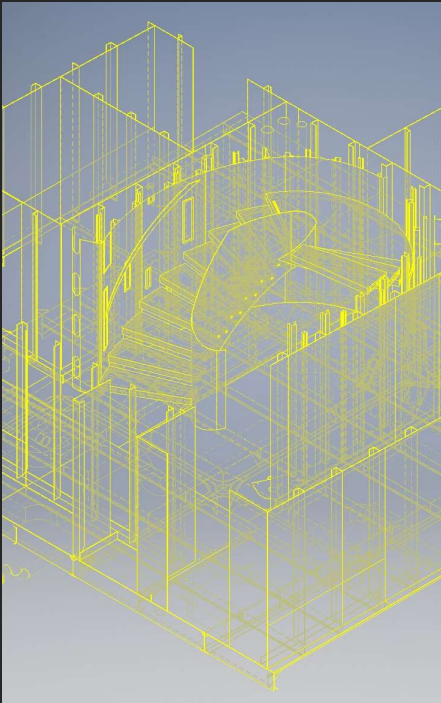
- Demolishing of old interior
- Building new:
 - 2 new cabins converted from Gym and Laundry areas
 - prefabricated wet units built on Raisio premises
 - including all furnishings and plumbing
 - new wall paneling, ceiling, flooring, furniture, cabinets, table, shelf, beds
 - electrical connections
 - Completely new laundry area
 - new wall paneling, ceiling, epoxy flooring, furniture, cabinets, sink, plinth for appliances
 - 3 prefabricated wet units with all furnishings and plumbing
 - electrical connections

• OPTIONALLY FOLLOWING CAN BE OFFERED AS WELL

- All electrical systems
- Sound & AV-systems including concept design
- All piping systems
- All HVAC systems
- Galley, pantry, laundry etc. equipment's
- Insulation etc. misc. background systems
- Exterior areas (ceilings, tiling, wind glass, etc.)
- Interior design, Architectural.

- New furniture for Bridge and offices
- tables, shelves
- New A-60 fire door in crew corridor
- Exterior bar
- New cabinetry and coolers
- New stone top
- Exterior area
- New outside garden area feature elements

Even complete staircase from design to delivery.



Across 5300 m² production facilities, we manufacture high-quality interior components. Our fully equipped inhouse production contains; metal, glass, wood, stone and paint workshops to produce tailor-made multi-functional products.

Details of delivery options.

Naval Architecture

- Calculation of weight distribution, hydrostatic calculation (intact and damage stability); freeboard calculation, watertight integrity plan; escape plan, life saving appliance, fire control plan; Structural Fire Protection, etc.
- FEA
- CFD
- Basic and Conceptual Design
- Structural Classification Design
- Structural Detail Design
- System Schematics and P&IDs
- Ship System design (piping, HVAC...)
- 3D model combining all ship systems, equipment, accommodation, and - - structural elements:
- All modelled data are “intelligent” containing data in background to use for calculations and automatic extraction for manufacturing parametric modelling
- Advance collision checking routines
- Automatic extraction of fabrication and installation data (pipe and HVAC spool drawings, structural cutting and marking data)
- Integration of CAD design and FEA into a single model

AV package

- System /technology Integrations
- User & management interfaces, smart cabin, hotel load calculation.
- Automation / control
- Audio
- Media / Video
- IT
- Lighting
- HVAC
- CCTV
- Documentation integration / workflow harmonizing
- Smart cabins: Curtains, Room temp, Floor heating, Towel heaters, Electric sliding doors, DND, Doorbell, TV lifts, Etc....
- Management & user interfaces (eq. mobile devices, ipads, control stations) Integrations to 3rd party systems
- Aftersales / lifecycle services
- Programming
- Commissioning











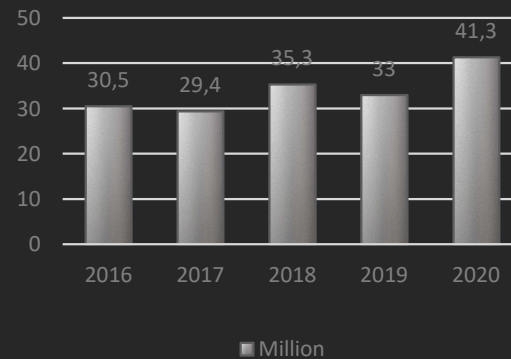




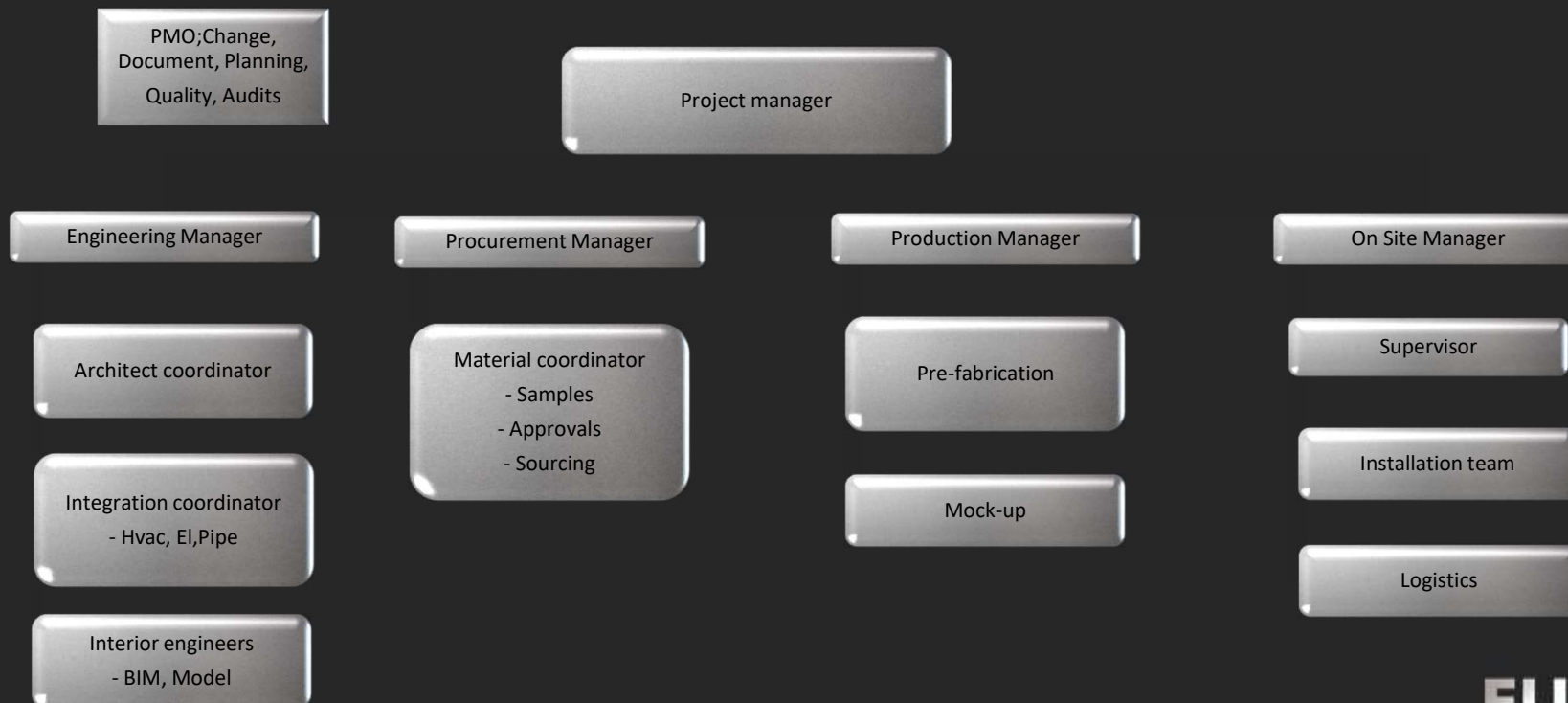
Euoplan engineering Ltd



Turnover



Euoplan Yacht Interiors Organization




EUROPLAN

YACHT INTERIORS

Contact information :

www.Europlan.fi

 [europlanyachtinteriors](https://www.instagram.com/europlanyachtinteriors)

www.linkedin.com/company/europlan-yacht-interiors



Janne Salminen

Janne.Salminen@Europlan.fi

+358 40 711 6229

Antti-Jussi Kesälä

CEO

Antti-Jussi.Kesala@Europlan.fi

+358 45 657 8999



Contact